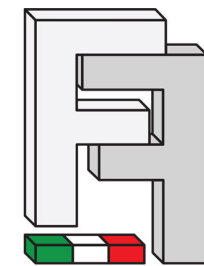




COLBERT

CINQUE

Via Giulia di Barolo 5 - Torino



FIAMMENGO FEDERICO S.R.L.

G*AA
GIAQUINTOARCHITETTIASSOCIATI

COLORI CITTA' DI TORINO

Analizzata la tipologia dell'edificio, valutate le tracce di colorazione e verificato l'ambiente circostante e l'edificio di via Verdi 47 con simili caratteristiche architettoniche, si adottano cromie idonee.

Si consiglia l'utilizzo di prodotti minerali naturali tipo silicati di potassio o calci stabilizzate e si vieta l'utilizzo di prodotti acril-silossanici.

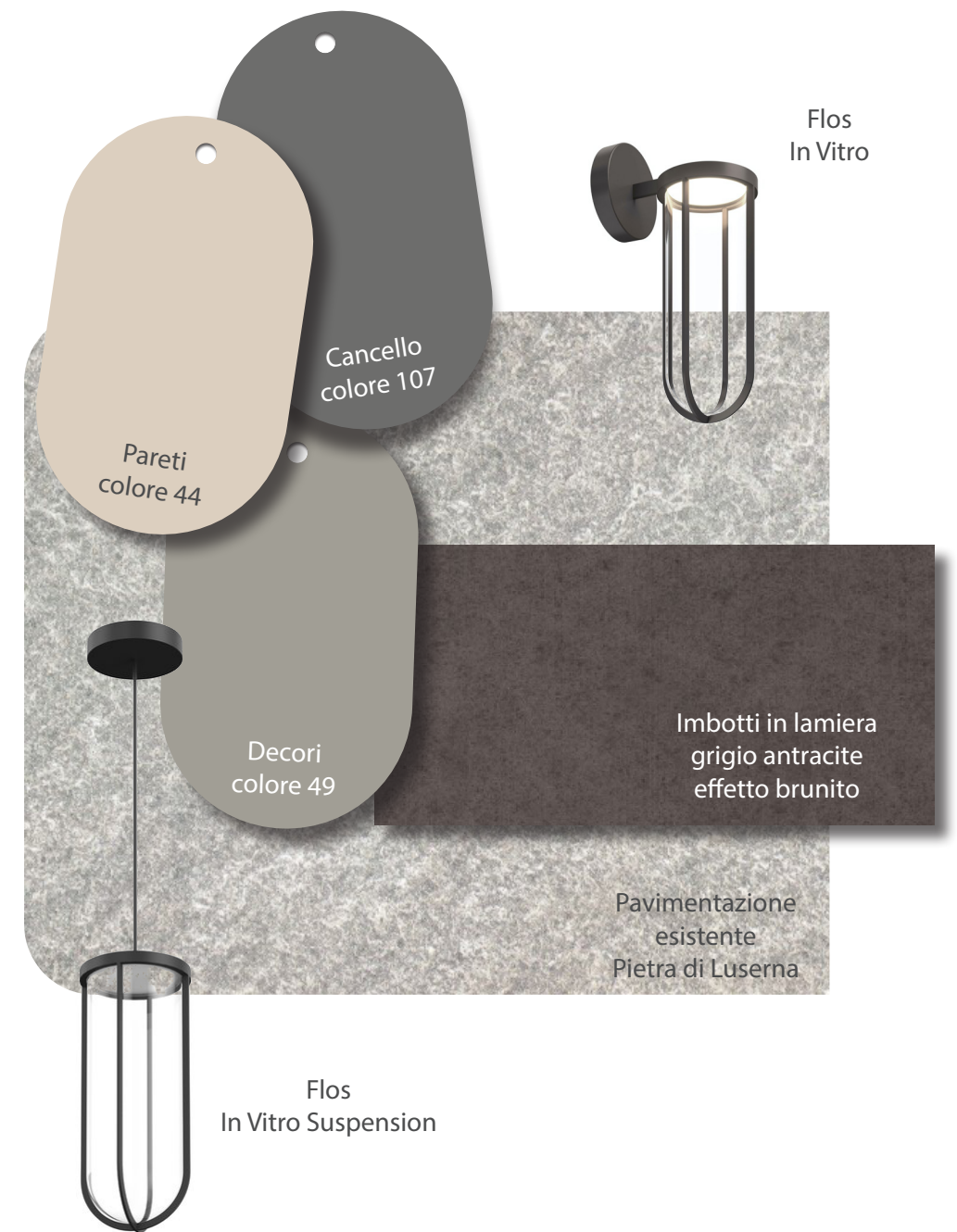


44
Granito Bianco

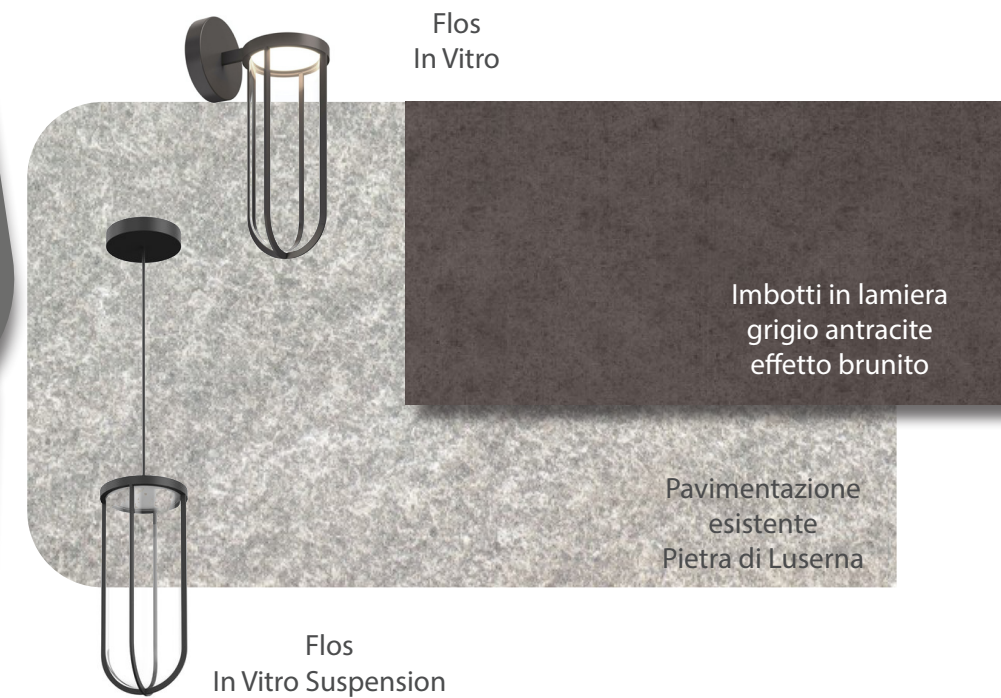
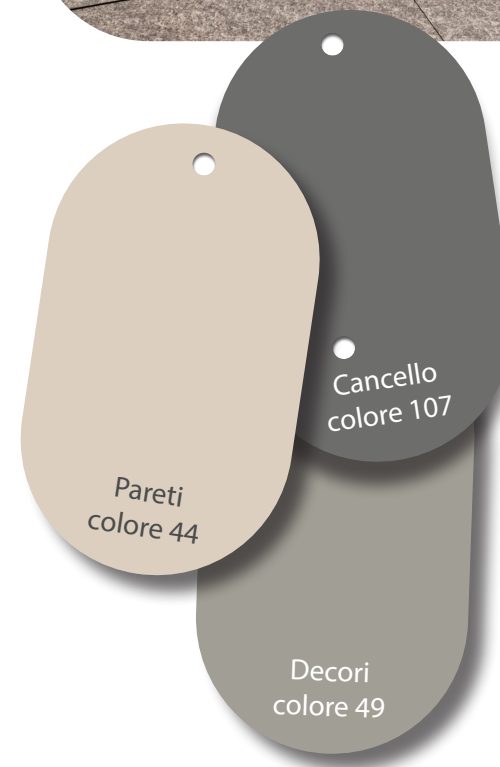
48
Calce di Ponte
Stura

49
Serizzo

107



COLORI FINITURE
ANDRONE





VISIONE NOTTURNA



IN VITRO

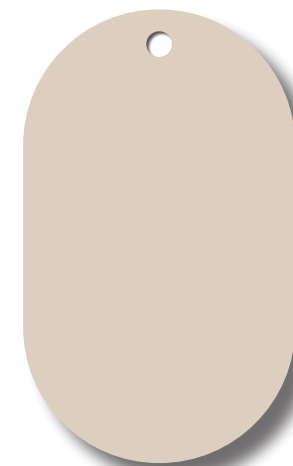
Flos Poinbreak
applique



IN VITRO SUSPENSION

Flos In Vitro
suspension

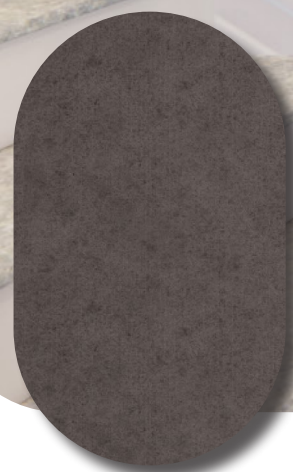
alternativa faretto a muro



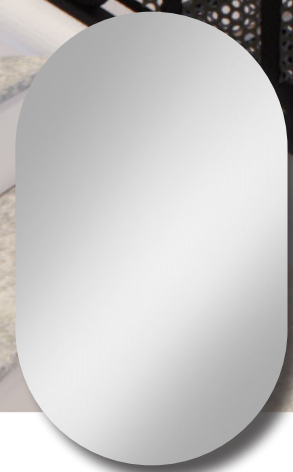
Tinta muro
Colore 44



Tinta muro
RAL 1019



Elementi metallici
Acciaio antracite
brunito



Specchio



Pavimento e Gradini
Luserna

VANO SCALA





CORRIDOI COMUNI





CORRIDOI COMUNI







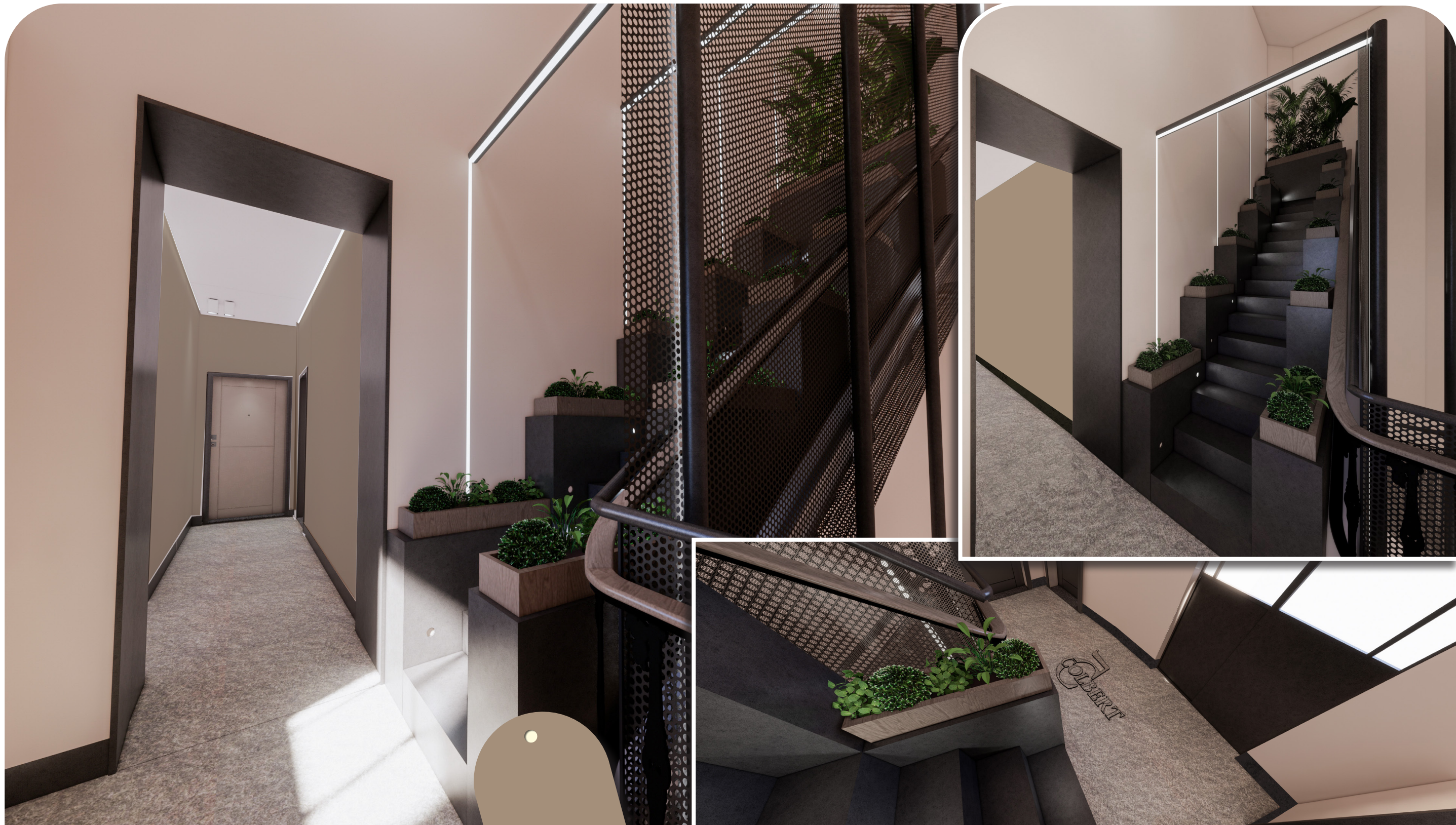
RAL 1019

LAMIERA



RAL 1019

Polka dot pattern



VANO SCALA
ULTIMO PIANO

RAL 1019





TRACKING MAGNET

PALESTRA



Pavimento
Tecnico

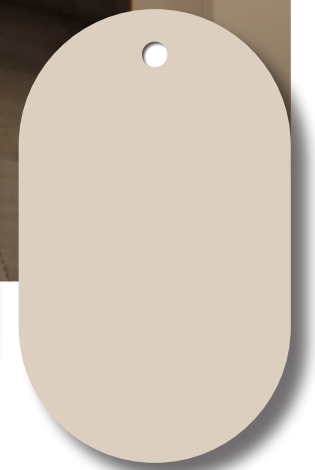
Muri
Mattone faccia a vista



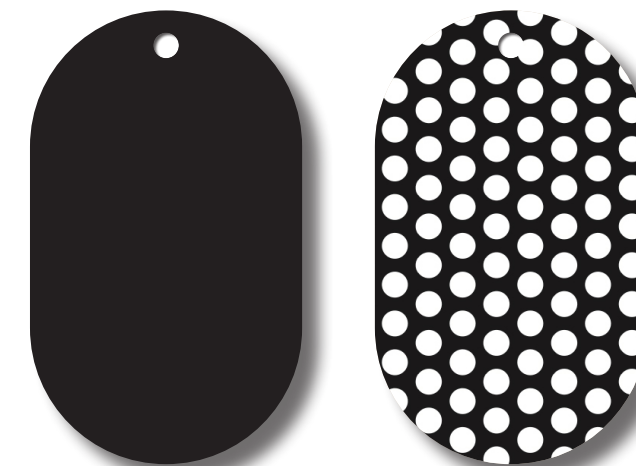
Pavimento
Gres effetto cemento



Soffitto
Mattone faccia a vista

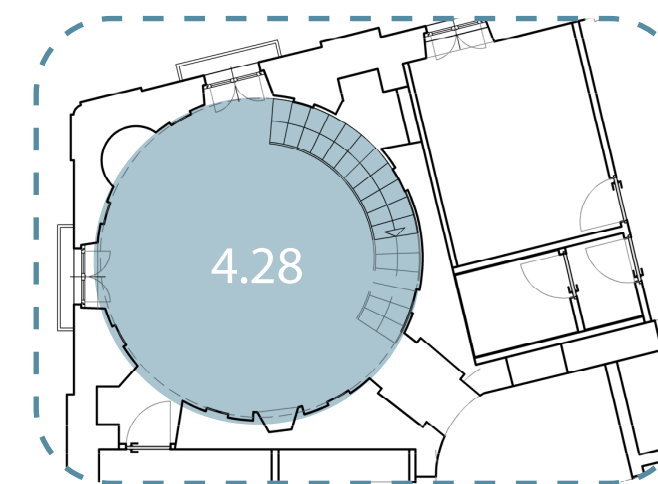


Intonaco
Colore 44



Struttura
Lamiera nera

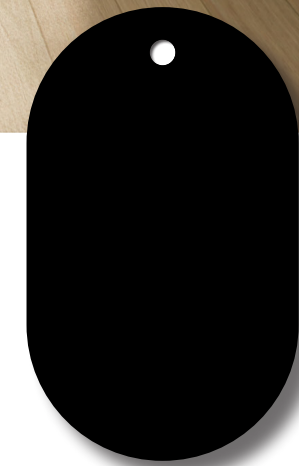
Struttura
Lamiera microforata
nera



Navigator

SCALE INTERNE





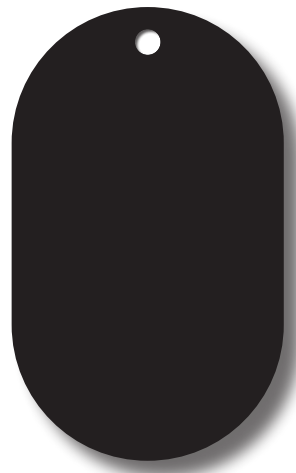
Parapetto
Lamiera nera



Parapetto
Lamiera microforata
nera



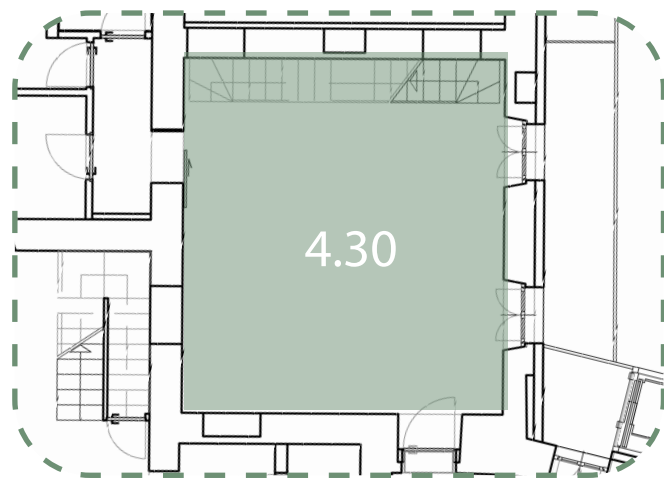
Struttura
Intonaco bianco



Struttura
Lamiera nera



Struttura
Lamiera microforata
nera



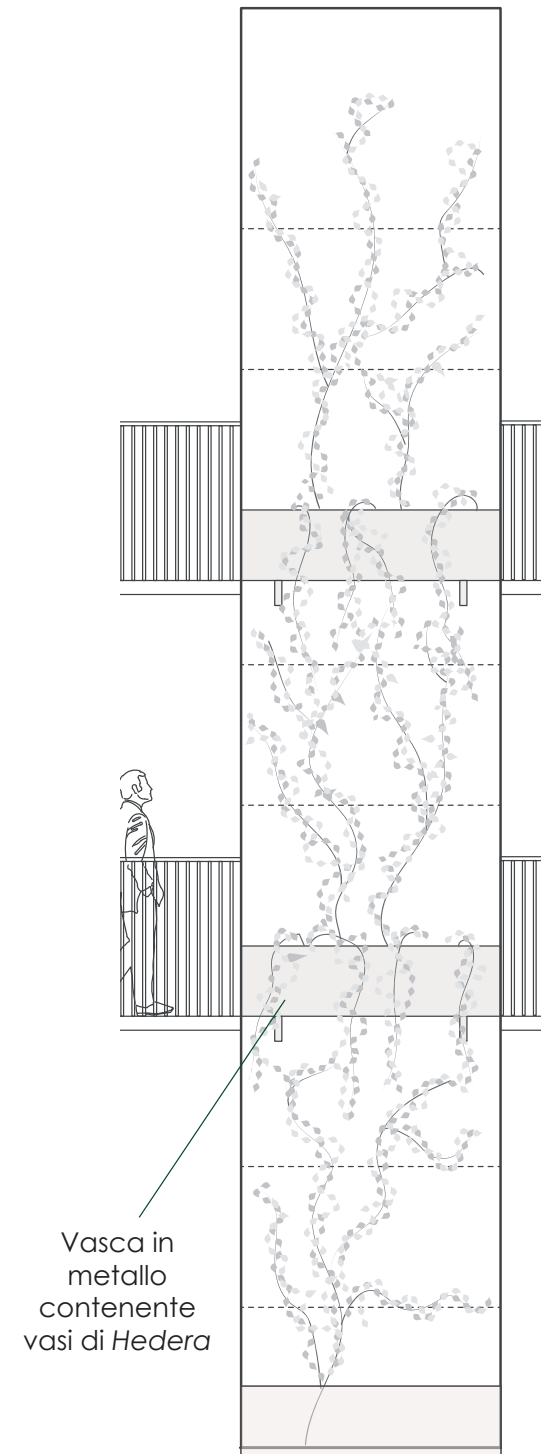
Navigator



VISTA NOTTURNA



44
granito
bianco



Vano ascensore





OPZIONI PAVIMENTAZIONE ESTENA



Luserna



Cemento



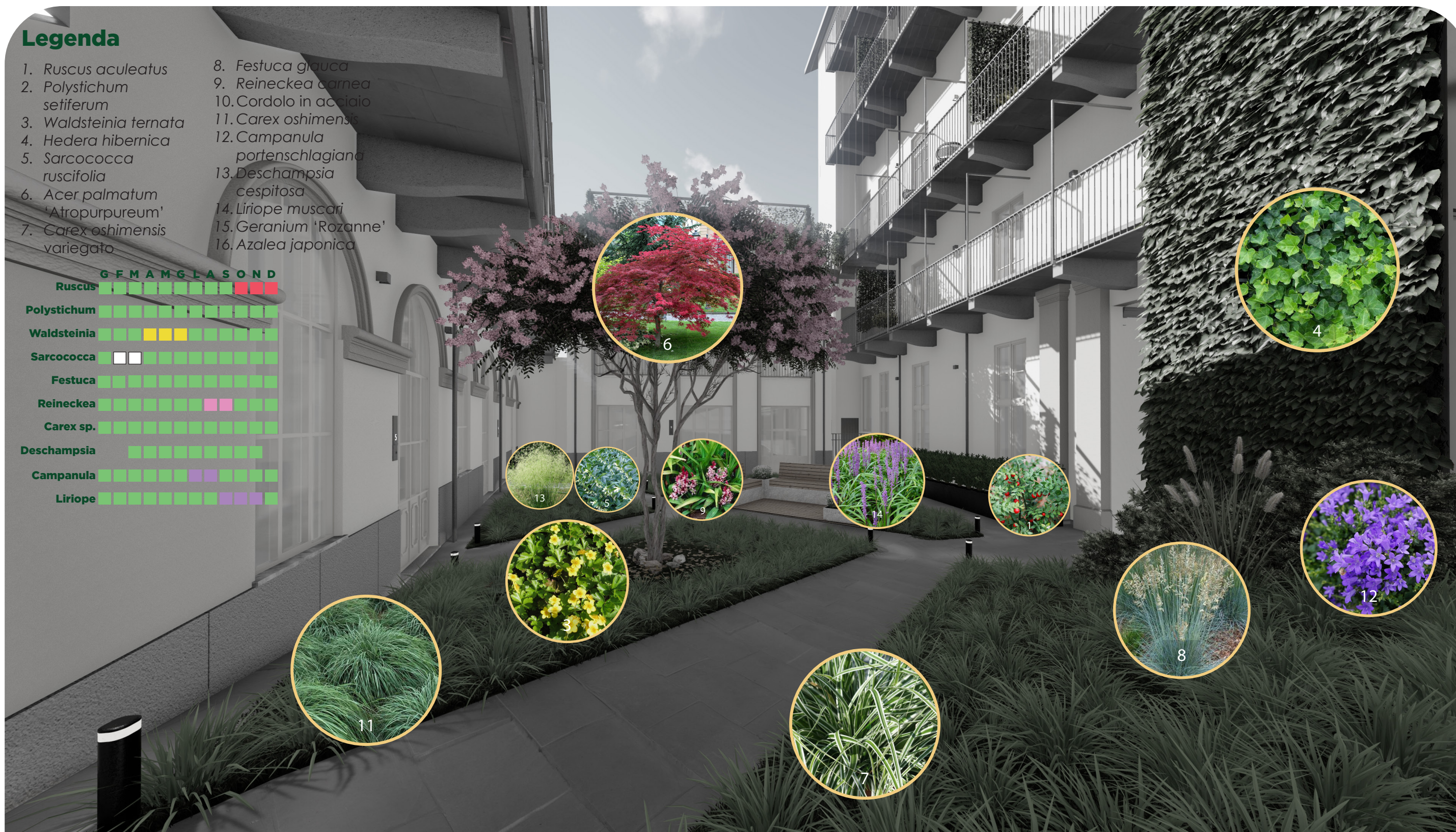
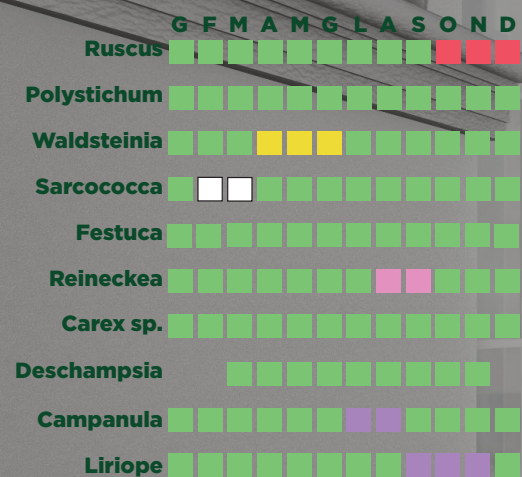


VISTE NOTTURNE GIARDINO



Legenda

- | | |
|---|---------------------------------------|
| 1. <i>Ruscus aculeatus</i> | 8. <i>Festuca glauca</i> |
| 2. <i>Polystichum setiferum</i> | 9. <i>Reineckea carnea</i> |
| 3. <i>Waldsteinia ternata</i> | 10. Cordolo in acciaio |
| 4. <i>Hedera hibernica</i> | 11. <i>Carex oshimensis</i> |
| 5. <i>Sarcococca ruscifolia</i> | 12. <i>Campanula portenschlagiana</i> |
| 6. <i>Acer palmatum</i> 'Atropurpureum' | 13. <i>Deschampsia cespitosa</i> |
| 7. <i>Carex oshimensis</i> variegato | 14. <i>Liriope muscari</i> |
| | 15. <i>Geranium</i> 'Rozanne' |
| | 16. <i>Azalea japonica</i> |



OPZIONI VEGETAZIONE



PROPOSTA





L01
Outgraze 35 1200



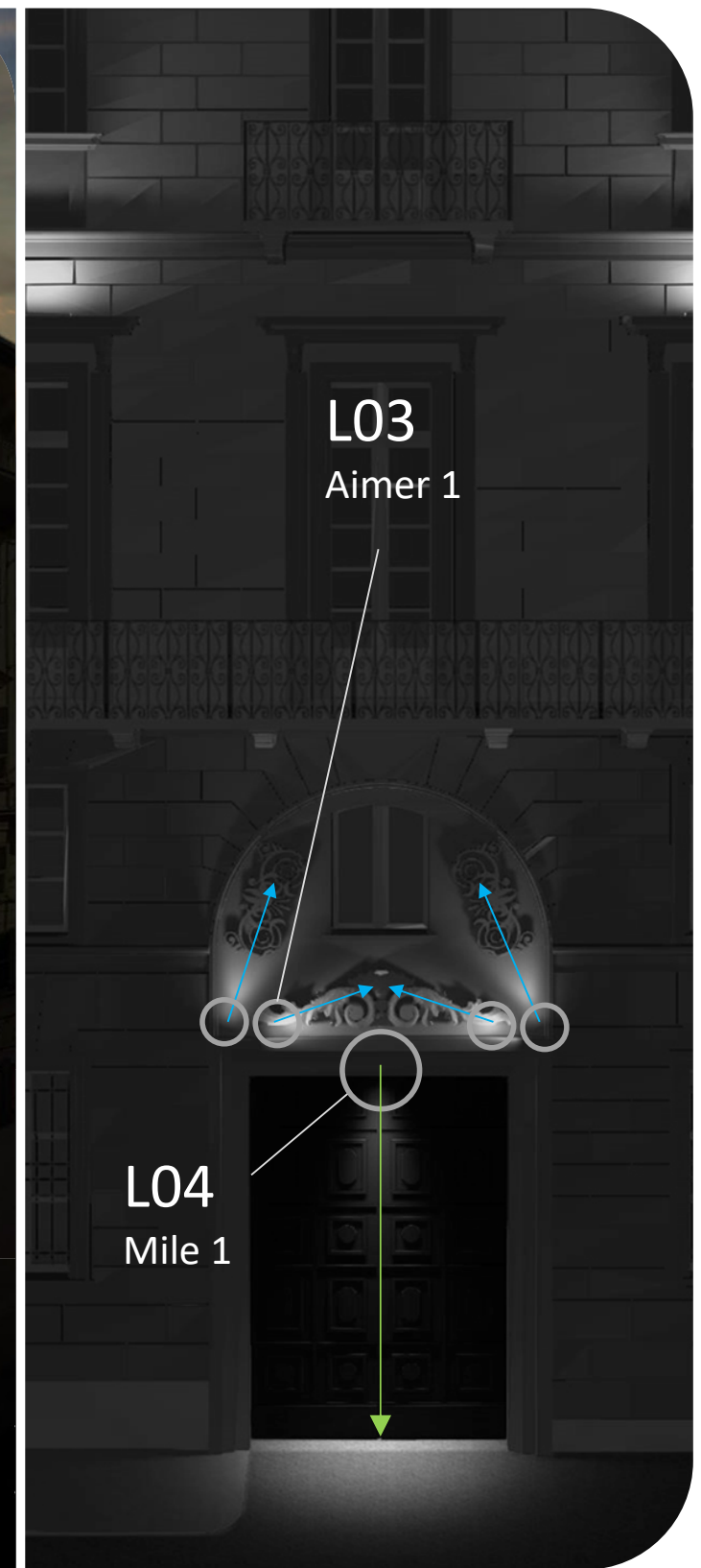
OUTGRAZE



AIMER 1



MILE 1



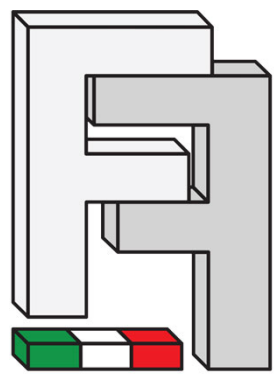
L03
Aimer 1

L04
Mile 1



COLBERT

CINQUE



FIAMMENGO FEDERICO S.R.L.

G*AA
GIAQUINTO ARCHITETTI ASSOCIATI

